

Steering Column Switch Levers

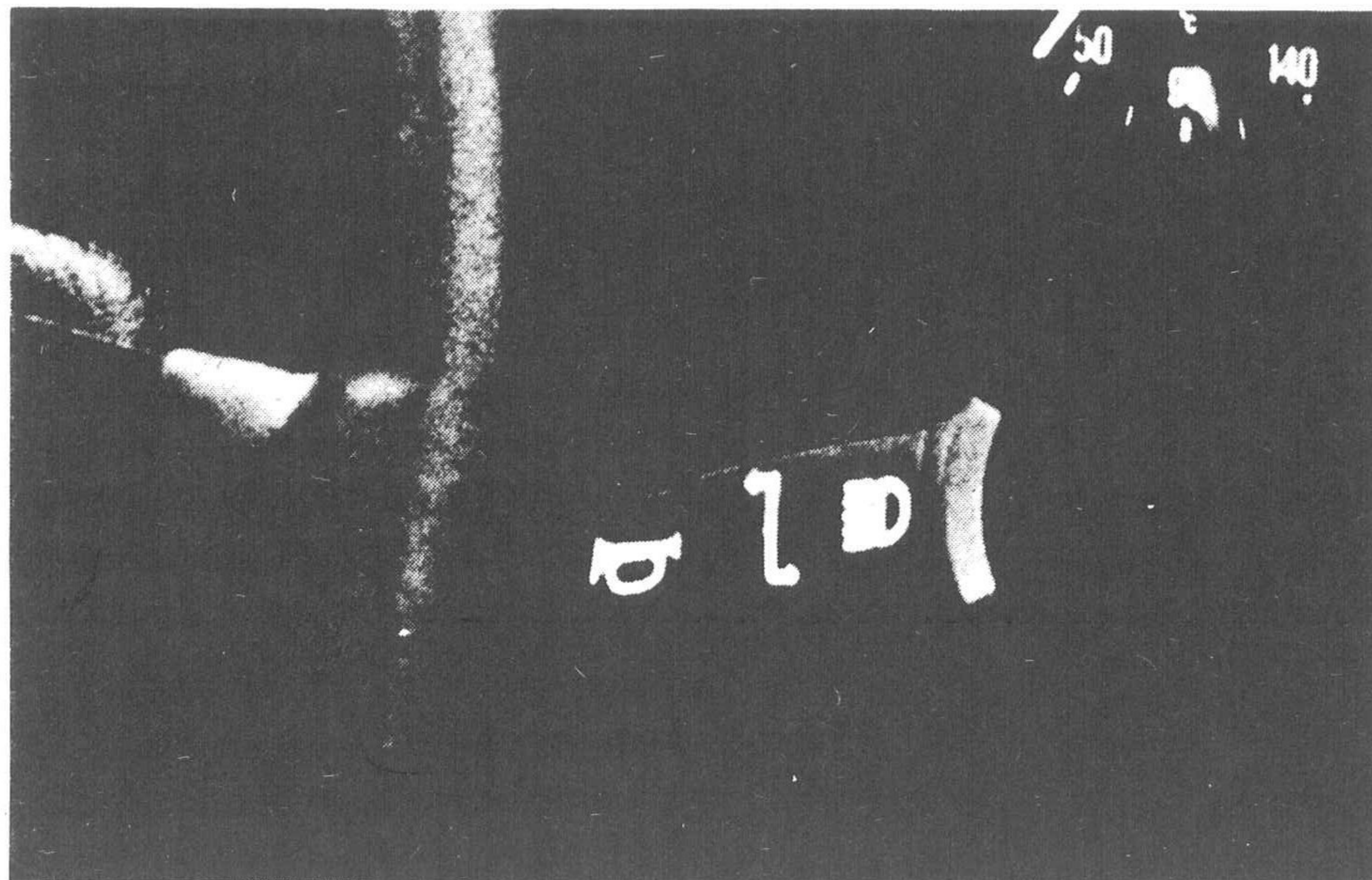


Fig 7

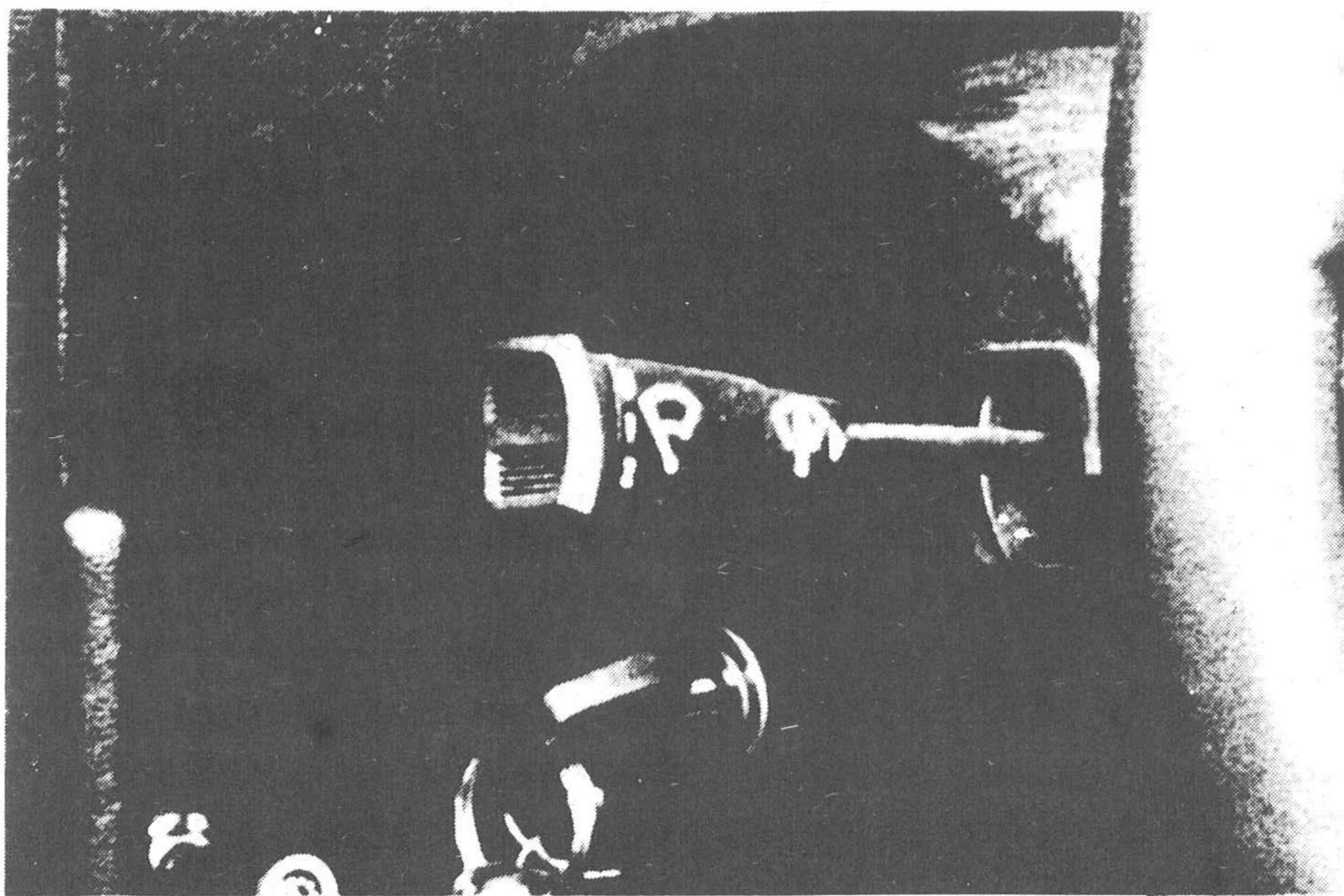


Fig 8

Right-hand Lever (Fig 7)

Horn: Press the end of the lever inwards towards the steering column.

Direction Indicators: Move the lever up for left turn, down for right turn.

Lane Change: After signalling right or left lane change the lever must be returned to centre manually, as steering wheel movement is too small for auto-return.

Headlamps: with the console switch "on" and the lever central the headlamps are in the "dip" position. For main beam, push the lever forwards (towards the fascia); return to the mid-position for dipped beam.
NOTE: Headlamps and rear fog lamps are inoperative until side and rear lamps are switched on.

Headlamp Flash: Pull the lever towards the steering wheel for headlamp flash, which will operate irrespective of the position of the main headlamp switch on the console.

Left-Hand Lever (Fig 8)

Screen Wash: Press the lever inwards towards the steering column.

Screen Wipe: Pull the lever towards the steering wheel for intermittent wipe. Move the lever down for normal wipe. Move the lever fully down for high-speed wipe.